

SERIES XT AND XW

PERFORMANCE MAXIMUM RANGE:

XT: 2.2 GPH (8.3 liter/hr)
 XW: 9.2 GPH (34.8 liter/hr)
 3000 psi (211 Bar)

GENERAL SPECIFICATIONS

Liquid End Type:
 Hydraulically Actuated Disc Diaphragm

Liquid Temperature Range:
 Metallic Heads: 20° to 200° F (-7° to 93° C)

Capacity Adjustment:
 Hydraulic Bypass from 0 to 100%
 While Running or Stopped

Coating System:
 Polyester TGIC Powdercoating

Capacity Control:
 Manual Micrometer (standard)
 Electronic (optional)
 Variable Speed (optional)

Warranty:
 Three Year Standard
 (details available separately)

Steady State Accuracy:
 ± 1.0 % over 10:1 Turndown

Average Shipping Weight:
 XT - 75 lbs (34 kg)
 XW - 95 lbs (43 kg)

Internal Relief Valve:
 Adjustable (Standard)

Stroke Length:
 XT - 0.7" (17.8 mm)
 XW - 1.5" (38 mm)

Number of Pumping Heads:
 Simplex Standard



mRoy XT

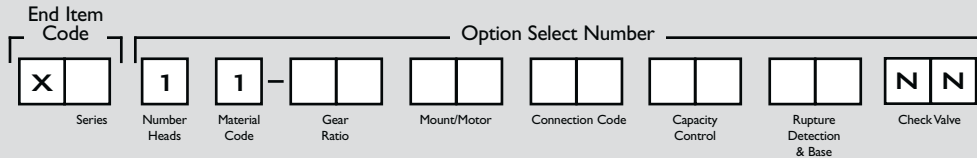
CAPACITY/PRESSURE TABLE

Capacities are based on simplex liquid end configurations

SERIES	GEAR RATIO CODE	STROKES PER MINUTE		METALLIC LIQUID ENDS						
				GPH AT 2000 PSI		GPH AT 2500 PSI		GPH AT 3000 PSI		
		60 HZ	50 HZ	60 HZ	50 HZ	60 HZ	50 HZ	60 HZ	50 HZ	
mRoy XT 1 1/32" (9 mm) Plunger	77	23	19	0.27	0.23	0.26	0.21	0.24	0.20	Requires 1/2 HP minimum
	48	37	30	0.44	0.37	0.41	0.34	0.38	0.32	
	24	73	60	0.87	0.73	0.80	0.67	0.74	0.62	
	15	117	96	1.37	1.14	1.27	1.06	1.19	0.99	
mRoy XW 1/2" (13 mm) Plunger	10	185	152	2.2	1.8	2.1	1.7	1.9	1.6	Requires 1 HP minimum
	38	48	40	2.8	2.3	2.6	2.2	2.5	2.1	
	25	72	60	4.3	3.6	4.0	3.3	3.8	3.1	
	19	96	80	5.8	4.8	5.4	4.5	5.0	4.2	
	12	144	120	9.2	7.7	8.6	7.2	8.0	6.7	Requires 1.5 HP minimum

MODEL CODE SELECTION

Additional options are available. Consult with your representative



Series

Code	Description
T	T Frame
W	W Frame

Gear Ratio

XT Code	SPM @ RPM	
	1725	1425
77	23 spm	19 spm
48	37 spm	30 spm
24	73 spm	60 spm
15	117 spm	96 spm
10	185 spm	152 spm

XW Code	SPM @ RPM	
	1725	1425
38	47 spm	39 spm
25	72 spm	60 spm
19	95 spm	79 spm
12	144 spm	120 spm

Motor Mount

Code	Description
FR (XT & XW)	API Flange NEMA 56C
F4 (XT & XW)	API Flange NEMA 143/145C
SR (XT)	Close Coupled NEMA 56C
SS (XT)	Close Coupled IEC Frame 71, B5 Flange
FS (XT)	API Flange IEC Frame 71, B5 Flange
MD (XT)	API Flange IEC Frame 80 B5 Flange

Connection Code

Code	Description
NN	NPT Female (STANDARD)
I1	ANSI 150# RF 1/2" Threaded
33	ANSI 300# RF 1/2" Threaded
AA	ANSI 150# RF 1/2" Socket Welded
BB	ANSI 300# RF 1/2" Socket Welded
EE	ANSI 1500# RF 1/2" Socket Welded
66	ANSI 600# RF 1/2" Threaded

Capacity Control

Code	Description
M1	316 SS Manual Micrometer (STANDARD)
E1	Electronic - NEMA 4, 4-20 mA, 115 Volt
E2	Electronic - NEMA 4, 4-20 mA, 220 Volt
EA	Electronic - Ex Proof, 4-20 mA, 115 Volt
EB	Electronic - Ex Proof, 4-20 mA, 220 Volt

***When using control other than manual, derate pump capacity by 5%.**

Rupture Detection & Base

Code	Description
NN	None (STANDARD)
C5	Rupture Detection with Base & Gauge
SN	Rupture Detect with Base, Gauge, & NEMA 4 Switch
S7	Rupture Detect with Base, Gauge, & Ex Proof Switch

***When using rupture detection, derate pump capacity by 5%.**

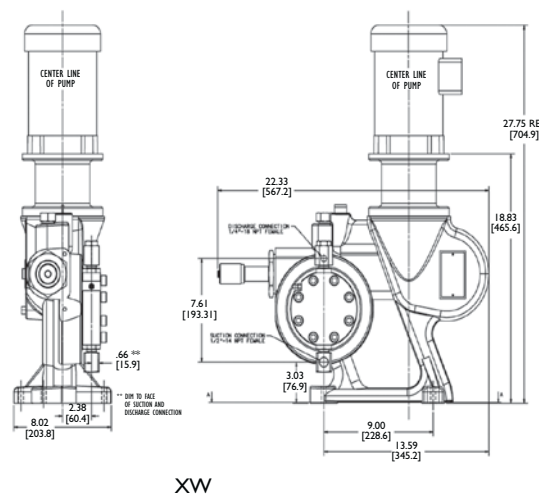
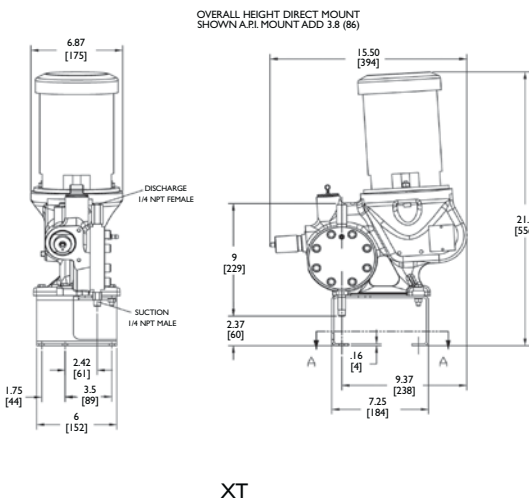
MATERIALS OF CONSTRUCTION

LIQUID END MATERIAL	DIAPHRAGM	HEAD	VALVE BODY	SEATS	BALLS	SEALS	CONTOUR PLATE	CHECK VALVE SPRING
316 ss	PTFE	316 ss	316 ss	316 ss	316 ss	Viton & Buna N	316 ss	316 ss

PIPING CONNECTION SIZES

DESCRIPTION	SUCTION	DISCHARGE
XT	1/4" NPT Male	1/4" NPT Female
XW	1/2" NPT Female	1/4" NPT Female

DIMENSIONS Approximate for envelope estimations. Certified prints are available



BOLT HOLE DIMENSIONS
Bolt holes accommodates 5/16" (8 mm) diameter bolts

