

## Lightnin LB2

LABMASTER AND BIOMIXER



A World Leader in Industrial Mixing since 1923, Lightnin has 90 years of unrivaled experience in industrial mixing technology, process knowledge, and technological innovation. Lightnin enjoys a global reputation for durable, long-lasting mixers, agitators, aerators, and flocculators for fluid process systems. We offer a full spectrum of impeller designs for diverse applications. In addition, we offer a worldwide service network, mixer repair, gearbox repair, and replacement parts programs. Look to Lightnin for knowledge, technology, and service excellence.

SPX FLOW, Inc. (NYSE:FLOW) is a leading manufacturer of innovative flow technologies, many of which help define the industry standard in the market segments they serve. From its headquarters in Charlotte, North Carolina, it operates a sales and support network, centers of manufacturing excellence, and advanced engineering facilities, throughout the world. Its cutting-edge flow components and process equipment portfolio includes a wide range of pumps, valves, heat exchangers, mixers, homogenizers, separators, filters, UHT, and drying technology that meet many application needs. Its expert engineering capability also makes it a premium supplier of customized solutions and complete, turn-key packages to meet the most exacting of installation demands. Incorporating many leading brands, SPX FLOW has a long history of serving the food and beverage, power and energy, and industrial market sectors. Its designs and engineered solutions help customers drive efficiency and productivity, increase quality and reliability, and meet the latest regulatory demands. In-depth understanding of applications and processes, state-of-the-art Innovation Centers, and advanced pilot/testing technology further assist in optimizing processes and reducing timescales to reliably meet production targets. To learn more about SPX FLOW capabilities, its latest technology innovations and complete service offerings, please visit [www.spxflow.com](http://www.spxflow.com).

## Lightnin LB2 - LabMaster and BioMixer

The SPX FLOW Lightnin LB2 LabMaster and BioMixer products are designed for lab and industrial applications. They have an integrated digital control and feedback system that allows the user to precisely and easily control the mixing process. This coupled with Lightnin Impeller configuration knowhow, produces consistent results that is critical for validation and scale up.

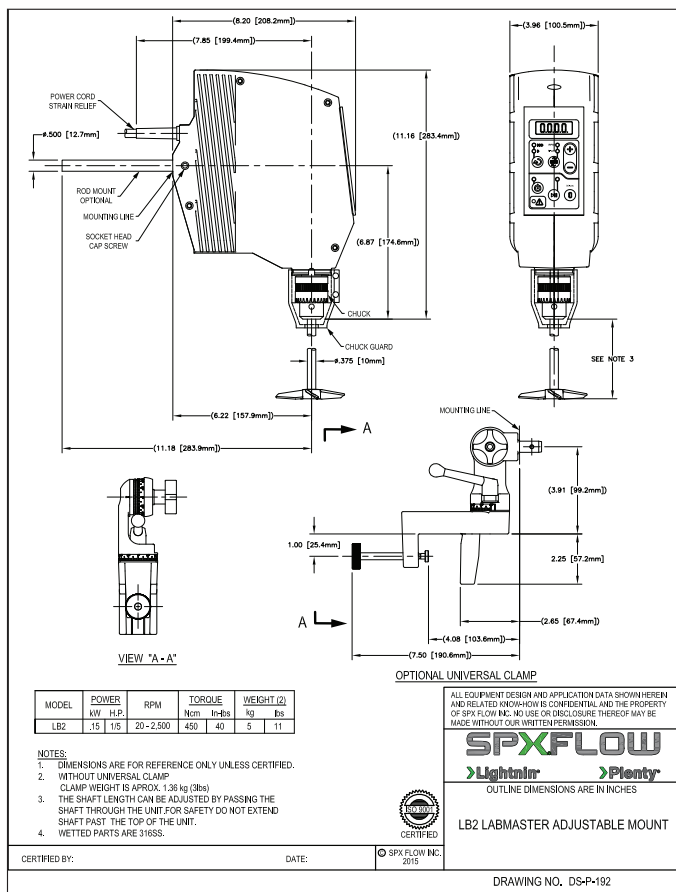
**“SPX FLOW Lightnin Mixing know how for process validation and high value process applications”**

**Ideal for simple blending, solids suspension, high-viscosity and gas-liquid applications.**

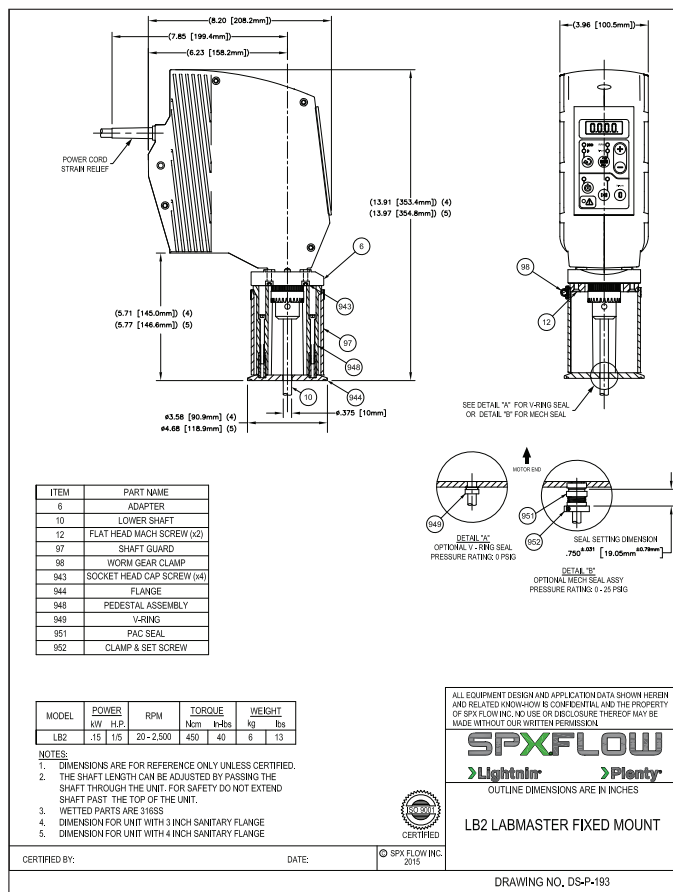
Designed for both **open and closed tank applications**, the Lightnin LB2 LabMaster comes with a variety of clamping systems thereby allowing for high flexibility. The Lightnin LB2 BioMixer is designed to connect to all current BioMixer Lower Assemblies.

The two speed transmission allows for constant torque over the complete speed range.

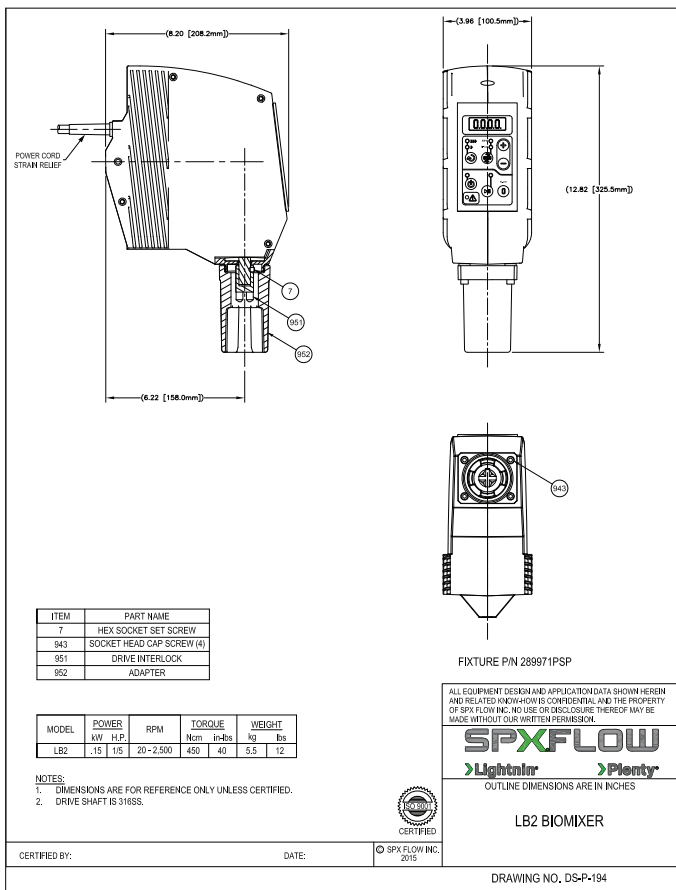
- Speed and Torque feedback and display
- Brushless DC motor – reduced maintenance.
- Automatic overload protection - increased life
- Two speed drive system
- Variable speed from 20 – 2500 rpm
- Maximum torque 450 Ncm (40 in-lbs.)
- 0.15KW (1/5HP)
- TENV Cast AL housing
- Through Stainless Steel Ø10mm (Ø3/8") Shaft - LabMaster
- Rod, Universal Clamping and Sanitary mounting configurations – LabMaster
- Hinged chuck guard - easily removable for cleaning – LabMaster open container mounts
- Container and tang adaptors for existing BioMixer Lower Assemblies
- Global availability, with UL, CSA, CE, RoHS certification, WEEE compliance and IP42 rating
- Adjustable Ø10mm (Ø3/8") shaft with one end turned down to Ø8mm (Ø5/16") – non retrofit models
- A310 86mm, (3.4"), A100 79mm, (3.1"), R100 51mm, (2.0") and A320 127mm, (5.0") impellers – LabMaster
- Two sets of colored beads – LabMaster



LB2 LabMaster Adjustable Mount



LB2 LabMaster Fixed Mount



LB2 BioMixer



Stand Clamp  
#289826PSP



Premium Stand  
(1" dia. rod)  
#289827PSP



## LIGHTNIN LB2 LABMASTER - SPECIFICATIONS

Low Speed Range (Max Torque)	20 - 550 rpm 450 Ncm / 40 in-lbs.
High Speed Range	500 - 2500 rpm 90 Ncm / 8 in-lbs.
Mechanical Power	0.15Kw / 0.2HP
Input Power to Power Supply	Single Phase 115V, 50/60 Hz and 230V, 50/60 Hz
Electrical Power to Mixer	5A, 150W
Weight	5Kg / 11 Lbs
Speed Accuracy	± 1 rpm; ± 1% of reading
Torque Accuracy	± 1 in-lb (1Ncm) or ± 5% of reading
Approvals/ Environmental	UL, CSA, CE, RoHS, WEEE Compliant, IP42 rating
LabMaster - Standard Equipment	Calibration certificate, Stainless Steel Chuck, Chuck key, Chuck guard, 5" Mounting post, Power cord and operating instructions.
LabMaster - Standard Equipment (Non-Retrofit Models)	<ul style="list-style-type: none"> <li>Clamping system (excluding stand and clamp): Rod and Universal Clamp</li> <li>Shafts: Ø10mm x 610mm (Ø3/8" x 24") and Ø8mm x 610mm (Ø5/16" x 24")</li> <li>Impellers: A310 86mm, (3.4"), A100 79mm, (3.1"), R100 51mm, (2") and A320 127mm, (5")</li> <li>Color Beads: 2 sets of different colors</li> </ul>
BioMixer - Standard Equipment	Calibration certificate, Tank and Shaft Adaptors, Power cord and operating instructions.
Spares/Accessories	Full range of spares and accessories

## SPX FLOW, Inc. - Global locations

## USA

13320 Ballantyne Corporate Place  
Charlotte, NC 28277  
United States of America  
+1 704 752 4400

## CHINA

7F Nanfung Tower  
1568 Hua Shan Road  
Shanghai 200052 China  
P: +86 (21) 22085889

## UK

Ocean House,  
Towers Business Park  
Didsbury, Manchester  
M20 2LY, UK  
P: +44 161 249 1170

## MIDDLE EAST FZE

P.O Box 299745,  
Downtown Jebel Ali  
The Galleries 4  
Dubai, U.A.E.  
P: +971 4 8143400

## SPX FLOW, LLC - LIGHTNIN &amp; PLENTY MIXERS

135 Mt. Read Blvd.  
Rochester, NY 14611  
P: +1 (888) 649-2378 (MIX-BEST), US and Canada) or +1 (585) 436-5550  
F: +1 (585) 436-5589  
E: [lightnin@spx.com](mailto:lightnin@spx.com) • [www.spxflow.com/lightnin](http://www.spxflow.com/lightnin)

For other Sales locations, click  
[www.lightninmixers.com/contacts/where-to-buy/](http://www.lightninmixers.com/contacts/where-to-buy/)  
or use your SmartPhone and the QR Code.



SPX FLOW, Inc. reserves the right to incorporate our latest design and material changes without notice or obligation.

Design features, materials of construction, and dimensional data, as described in this bulletin, are provided for your information only and should not be relied upon unless confirmed in writing. Please contact your local sales representative for product availability in your region. For more information, visit [www.spxflow.com](http://www.spxflow.com).

The green ">" is a trademark of SPX FLOW, Inc.