

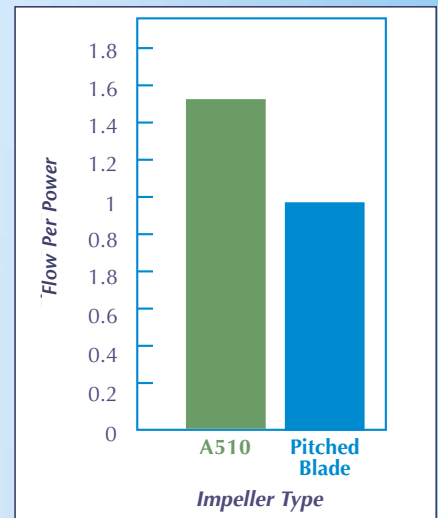
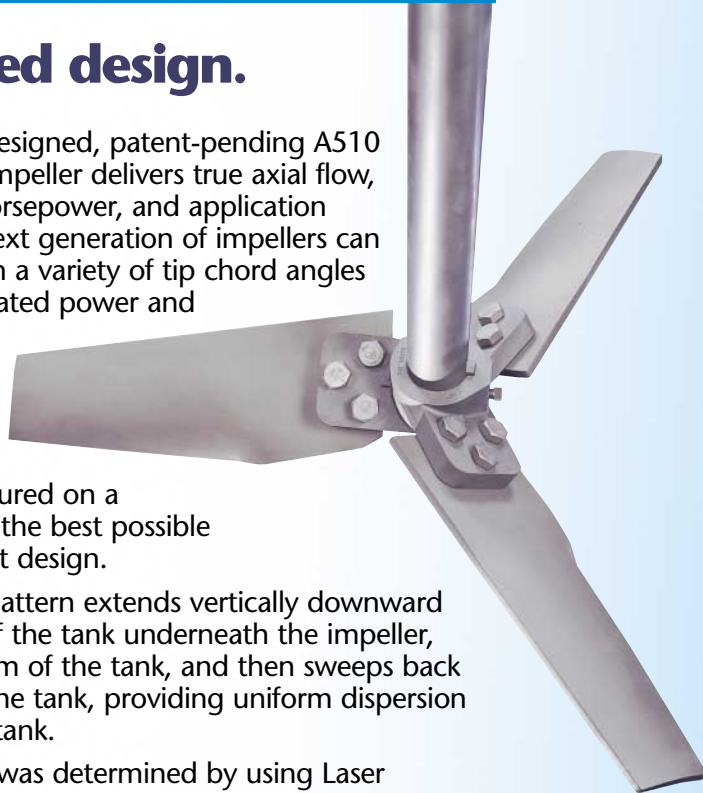
# LIGHTNIN<sup>®</sup> A510 Impeller

## Optimized design.

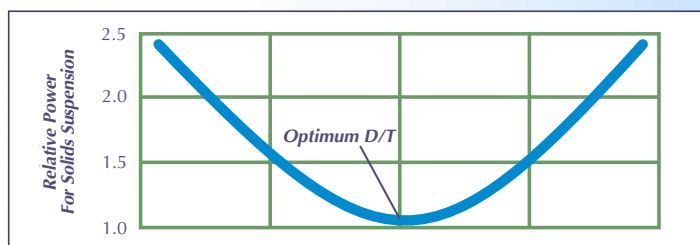
The new, laser-designed, patent-pending A510 high-efficiency impeller delivers true axial flow, high flow-per-horsepower, and application flexibility. This next generation of impellers can be provided with a variety of tip chord angles (and their associated power and flow numbers) for optimized mixing in your process. Each A510 impeller is custom-configured on a per-job basis for the best possible process and shaft design.

The A510 flow pattern extends vertically downward to the bottom of the tank underneath the impeller, across the bottom of the tank, and then sweeps back up the sides of the tank, providing uniform dispersion throughout the tank.

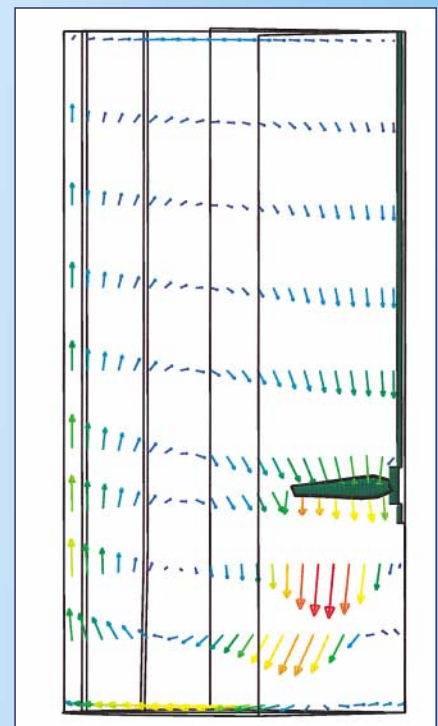
A510 geometry was determined by using Laser Doppler Velocimetry and Computational Fluid Dynamics.



*The A510 impeller generates more than 50 percent more flow/power than a pitched blade turbine.*



*Substantial power penalties are incurred if the ratio of impeller diameter-to-tank diameter ratio deviates from the optimum. The flexibility of the A510 allows you to operate closer to the optimum for your specific process.*



**Computational Fluid Dynamic (CFD) diagram of the A510 impeller fluid velocities shows:**

- Uniform flow pattern
- Strong vertical motion on the discharge side
- Strong axial flow up the sidewalls and back into the impeller



## YOU AND LIGHTNIN. THE RIGHT MIX.

135 Mt. Read Blvd., P.O. Box 1370, Rochester, NY 14603  
Telephone: 888-MIX BEST Fax: 716-436-5589. [www.LIGHTNIN-MIXERS.com](http://www.LIGHTNIN-MIXERS.com)

# LIGHTNIN